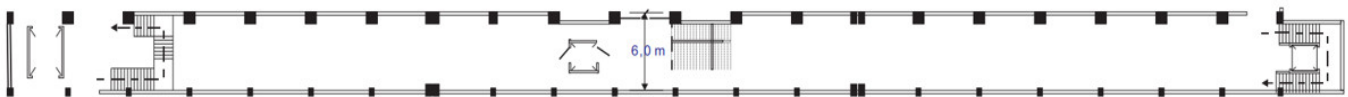
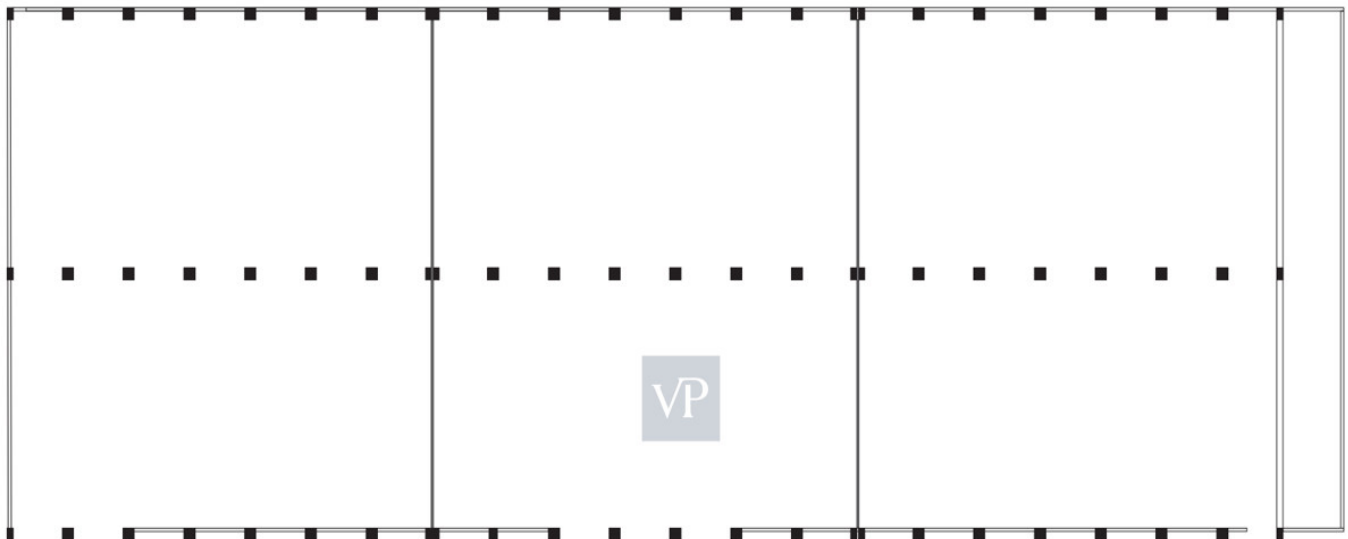


Athens Center – Central Greece

# Versatile Commercial Property with Prime Road Access

Objektnummer: GR23373118



Σημείωση: το ανωτέρω κομμάτι παρουσιάζεται αποκομμένο διότι εικονίζει δύο ορόφους, έναν χαμηλότερα και έναν ψηλότερα από το κύριο κτίριο

ΚΑΙΜΑΞ: 1:300

MIETPREIS: 24.800 EUR

Objektnummer: GR23373118 - 12241 Athens Center – Central Greece

- Auf einen Blick
- Die Immobilie
- Ein erster Eindruck
- Ansprechpartner

Objektnummer: GR23373118 - 12241 Athens Center – Central Greece

## Auf einen Blick

Objektnummer	GR23373118	Büro/Praxen	Bürofläche
Bezugsfrei ab	nach Vereinbarung	Gesamtfläche	ca. 4.960 m <sup>2</sup>
Etage	1	Nutzfläche	ca. 0 m <sup>2</sup>

Objektnummer: GR23373118 - 12241 Athens Center – Central Greece

## Ein erster Eindruck

This property offers a flexible commercial space that directly connects to major roads, making it a prime location for various business purposes. The main area encompasses a spacious 4300 square meters, thoughtfully divided into three distinct fire safety zones equipped with the most stringent fire protection systems. Additionally, there is a 660 square meters office space situated on the second level. The property features three entrances, one of which includes a robust 4-ton industrial elevator for efficient transportation. Built in the year 2000, it combines modern functionality with established durability. With a shop window extending 110 meters, the property offers excellent visibility and exposure to passing traffic. It also provides ample parking space with a capacity for ten vehicles, ensuring convenience for both customers and employees.

Objektnummer: GR23373118 - 12241 Athens Center – Central Greece

## Ansprechpartner

Weitere Informationen erhalten Sie über Ihren Ansprechpartner:

VON POLL REAL ESTATE Athens

---

Kifisias Avenue 227 Athen  
E-Mail: [salesgreece@von-poll.com](mailto:salesgreece@von-poll.com)

*To Disclaimer of von Poll Immobilien GmbH*

---

[www.von-poll.com](http://www.von-poll.com)