

Peloponnese

# Villa Lithina. Traditional Residences in Monemvasia

Objektnummer: GR23373153



KAUFPREIS: 1.180.000 EUR • WOHNFLÄCHE: ca. 380 m<sup>2</sup>

Objektnummer: GR23373153 - 23070 Peloponnese

- Auf einen Blick
- Die Immobilie
- Ein erster Eindruck
- Ansprechpartner

Objektnummer: GR23373153 - 23070 Peloponnesse

## Auf einen Blick

Objektnummer	GR23373153	Kaufpreis	1.180.000 EUR
Wohnfläche	ca. 380 m <sup>2</sup>	Haustyp	Villa
Bezugsfrei ab	nach Vereinbarung	Nutzfläche	ca. 440 m <sup>2</sup>
Schlafzimmer	5	Ausstattung	Terrasse, Kamin
Badezimmer	4		

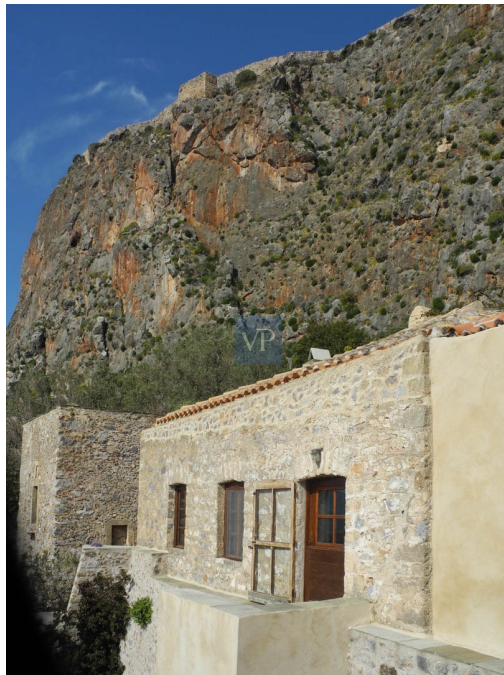
Objektnummer: GR23373153 - 23070 Peloponnese

## Die Immobilie



Objektnummer: GR23373153 - 23070 Peloponnese

## Die Immobilie



Objektnummer: GR23373153 - 23070 Peloponnese

## Die Immobilie



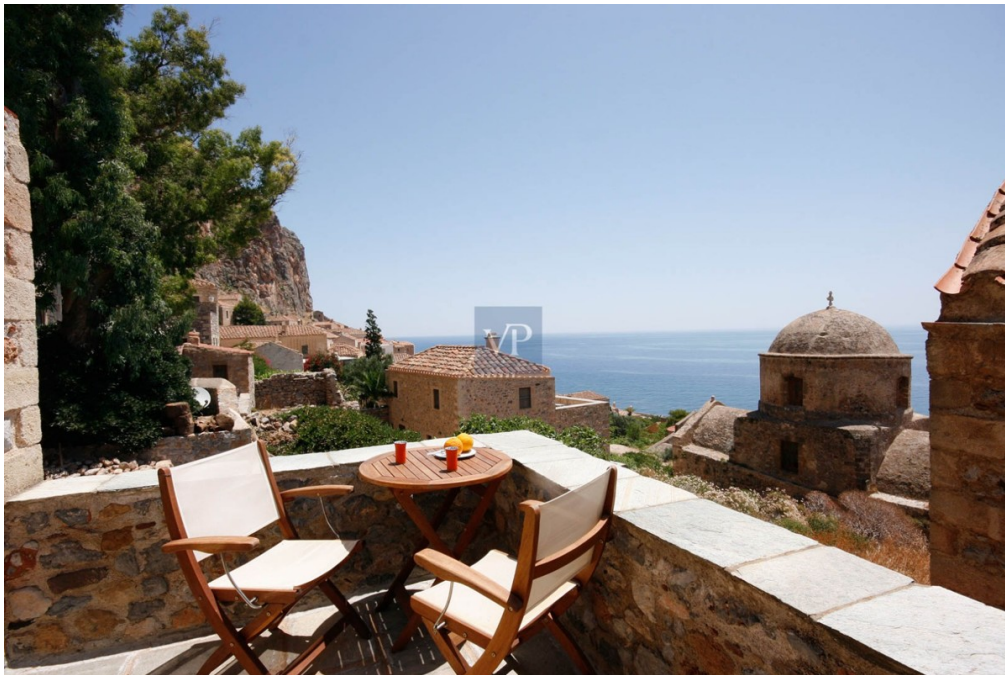
Objektnummer: GR23373153 - 23070 Peloponnese

## Die Immobilie



Objektnummer: GR23373153 - 23070 Peloponnese

## Die Immobilie





Objektnummer: GR23373153 - 23070 Peloponnese

## Die Immobilie



Objektnummer: GR23373153 - 23070 Peloponnese

## Die Immobilie



Objektnummer: GR23373153 - 23070 Peloponnese

## Die Immobilie



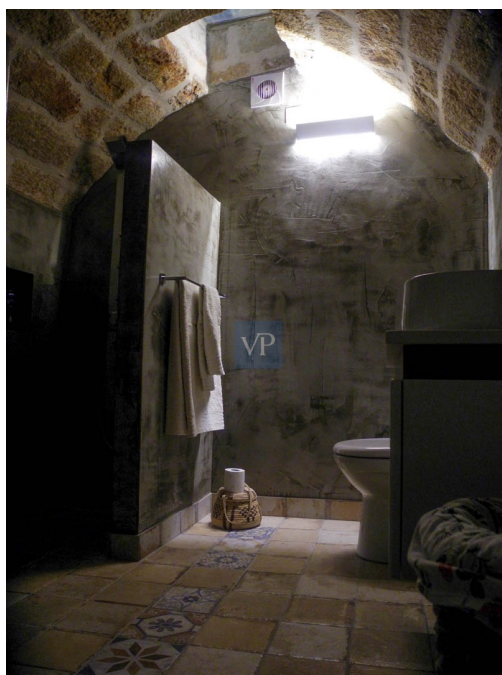
Objektnummer: GR23373153 - 23070 Peloponnese

## Die Immobilie



Objektnummer: GR23373153 - 23070 Peloponnese

## Die Immobilie



Objektnummer: GR23373153 - 23070 Peloponnesse

## Die Immobilie



Objektnummer: GR23373153 - 23070 Peloponnese

## Die Immobilie



Objektnummer: GR23373153 - 23070 Peloponnese

## Ein erster Eindruck

VILLA LITHINA – THE FULL EXPERIENCE A mediterranean fairytale awaits within the walls of the historic Monemvasia Castle. The property consists of three residences; the Villa plus two separate residences, totaling 381 m2 plus a shared courtyard (40 m2). Each residence offers the possibility of distinct dwellings that can be a private residence or a viable business. THE VILLA - MAIN HOUSE The courtyard leads to the main section of the property, measuring 205 m2 with two distinct entrances. Key features: Upper floor spacious living area with high ceilings, wooden framework and polished floors Fireplace Contemporary kitchen Large terrace with panoramic view of the castle citadel and surrounding sea Small indoor bridge on lower level Comfortable bedroom and renovated bathroom. The annexed double guest room featuring a stone arch divides the room in two (a sitting area on one side and a bedroom on the other) plus private bathroom Spacious bathroom with bathtub Terrace offering sea and castle views THE APARTMENT A 59 m2, lower level apartment opens into a hall which leads to a small living area with kitchenette. An arch way separates the two bedrooms (one double bedroom and one single bedroom) and a one shower bathroom. This apartment can be inter-connected to the annexed larger guest room situated above, offering a larger living area with an extra double bedroom with private bathroom. THE LITTLE HOUSE Consisting of 2 levels (116 m2), upon entry a dining area leads to a living room with traditional wooden ceiling framework, rich dark wooden floors and fireplace. Double-paneled doors lead to a terrace with views to the majestic cliff and Myrtoan Sea. A few steps down leads to the fully equipped kitchen. The lower level includes two bedrooms: one built into a stone vaulted room, the other being on two levels: a mezzanine with a double bed and a large bathroom. An independent common cellar for utilities plus storage of 20 m2 completes the property.



Objektnummer: GR23373153 - 23070 Peloponnese

## Ansprechpartner

Weitere Informationen erhalten Sie über Ihren Ansprechpartner:

VON POLL REAL ESTATE Athens

---

Kifisias Avenue 227 Athen  
E-Mail: [salesgreece@von-poll.com](mailto:salesgreece@von-poll.com)

*To Disclaimer of von Poll Immobilien GmbH*

---

[www.von-poll.com](http://www.von-poll.com)