

Luxembourg-centre ville – CBD

Office for rent in beautiful building with service

Property ID: 21



Property ID: 21 - L-1331 Luxembourg-centre ville – CBD

- At a glance
- The property
- Energy Data
- A first impression
- Contact partner

Property ID: 21 - L-1331 Luxembourg-centre ville – CBD

At a glance

Property ID	21	Commission	Fees: 15% to the charge under tenant
Available from	According to the arrangement	Total Space	ca. 80 m ²
		Usable Space	ca. 0 m ²

Property ID: 21 - L-1331 Luxembourg-centre ville – CBD

Energy Data

Type of heating Central heating

Property ID: 21 - L-1331 Luxembourg-centre ville – CBD

The property



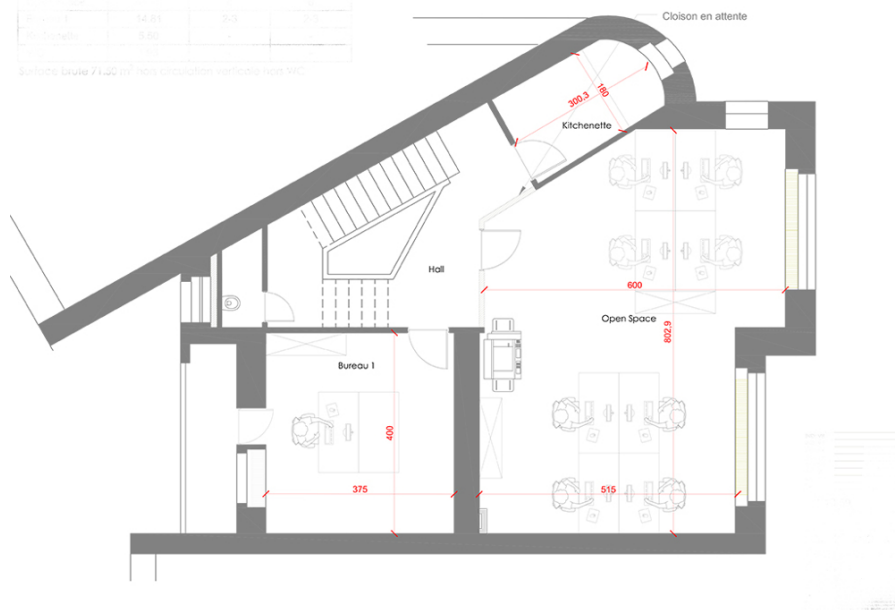
Property ID: 21 - L-1331 Luxembourg-centre ville – CBD

The property



Particulars	Surface (sqm)	Rate	Value (€)
Surface totale	71,20		
Surface utile	60,00		
Surface de bureaux	54,81	208	11.400
Surface de cuisine	8,50		
Surface de salle de réunion	6,69		

Surface utile 71,20 m² hors circulation verticale hors WC



Property ID: 21 - L-1331 Luxembourg-centre ville – CBD

A first impression

Offices to let in an entirely renovated building on one of the prestigious avenues of Luxembourg city -- CBD This property offers a common reception, meeting room, leisure room, kitchen and toilets, to be shared with the other two tenants. It is near all the amenities (public transport, restaurants, shops, etc) and close to the city center. The parking on the Winston Churchill square is also close by. Located on one of the sought after avenues of Luxembourg (Boulevard Grande Duchesse Charlotte), these offices are 15 min. walking from the railway stations, a few minutes from the main bus hub and 15 min. from the international airport.

Property ID: 21 - L-1331 Luxembourg-centre ville – CBD

Contact partner

For further information, please contact your contact person:

VON POLL REAL ESTATE Limpertsberg

6, avenue Pasteur Limpertsberg
E-Mail: limpertsberg@von-poll.com

To Disclaimer of von Poll Immobilien GmbH

www.von-poll.com