

Luxembourg-gare – Gare  
office for rent

*Property ID: LU881900103*



Property ID: LU881900103 - L-1611 Luxembourg-gare – Gare

- At a glance
- The property
- Energy Data
- Floor plans
- Contact partner

Property ID: LU881900103 - L-1611 Luxembourg-gare – Gare

## At a glance

Property ID	LU881900103
Available from	23.01.2020
Floor	4
Type of parking	2 x Underground car park, 280 EUR (Rent)

Purchase Price	15% loyer annuel eco payé par le propriétaire
Commission	15% loyer annuel eco payé par le propriétaire
Total Space	ca. 434 m <sup>2</sup>
Usable Space	ca. 0 m <sup>2</sup>

Property ID: LU881900103 - L-1611 Luxembourg-gare – Gare

## Energy Data

Type of heating            District heating

Property ID: LU881900103 - L-1611 Luxembourg-gare – Gare

## The property

Main entrance



Level +4  
Entrance



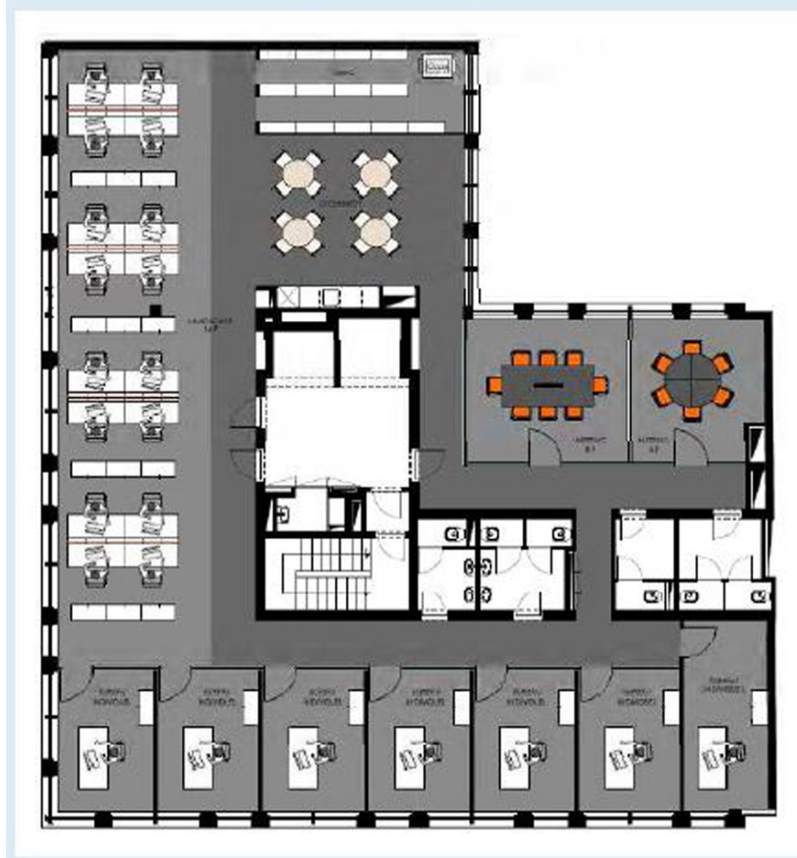
Level +4  
Open space

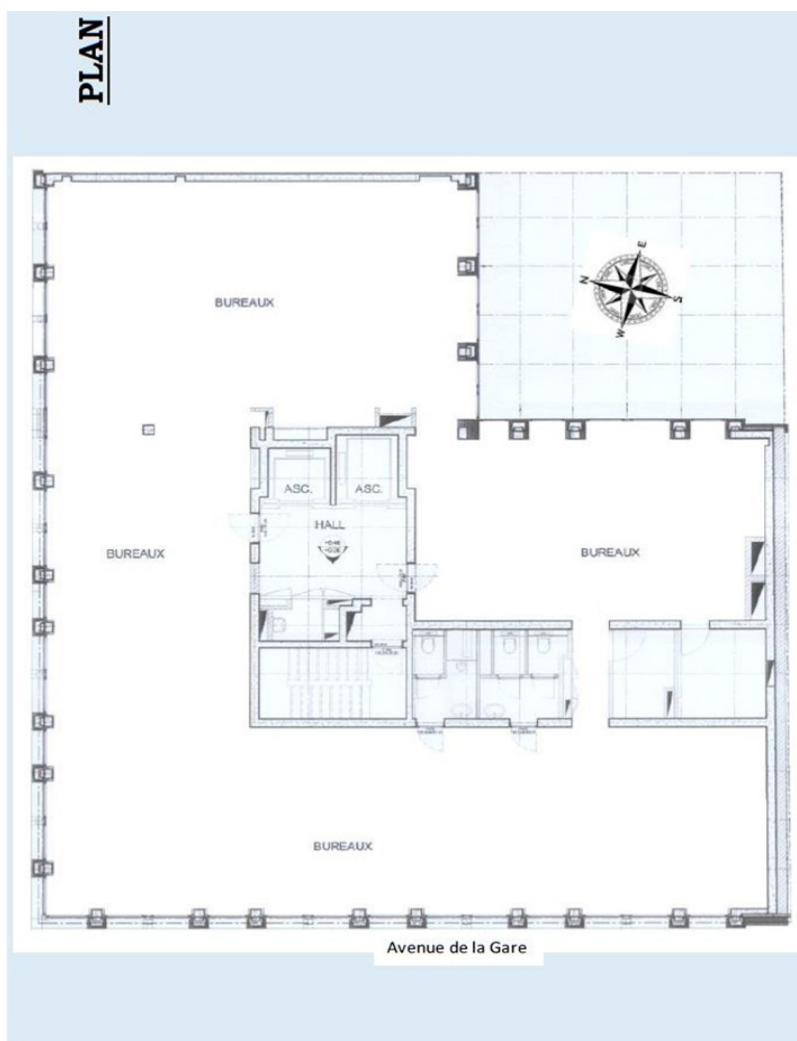


Property ID: LU881900103 - L-1611 Luxembourg-gare – Gare

## Floor plans

Sample of fitting-out





This floor plan is not to scale. The documents were given to us by the client. For this reason, we cannot guarantee the accuracy of the information.

Property ID: LU881900103 - L-1611 Luxembourg-gare – Gare

## Contact partner

For further information, please contact your contact person:

VON POLL REAL ESTATE Limpertsberg

---

6, avenue Pasteur Limpertsberg  
E-Mail: [limpertsberg@von-poll.com](mailto:limpertsberg@von-poll.com)

*To Disclaimer of von Poll Immobilien GmbH*

---

[www.von-poll.com](http://www.von-poll.com)