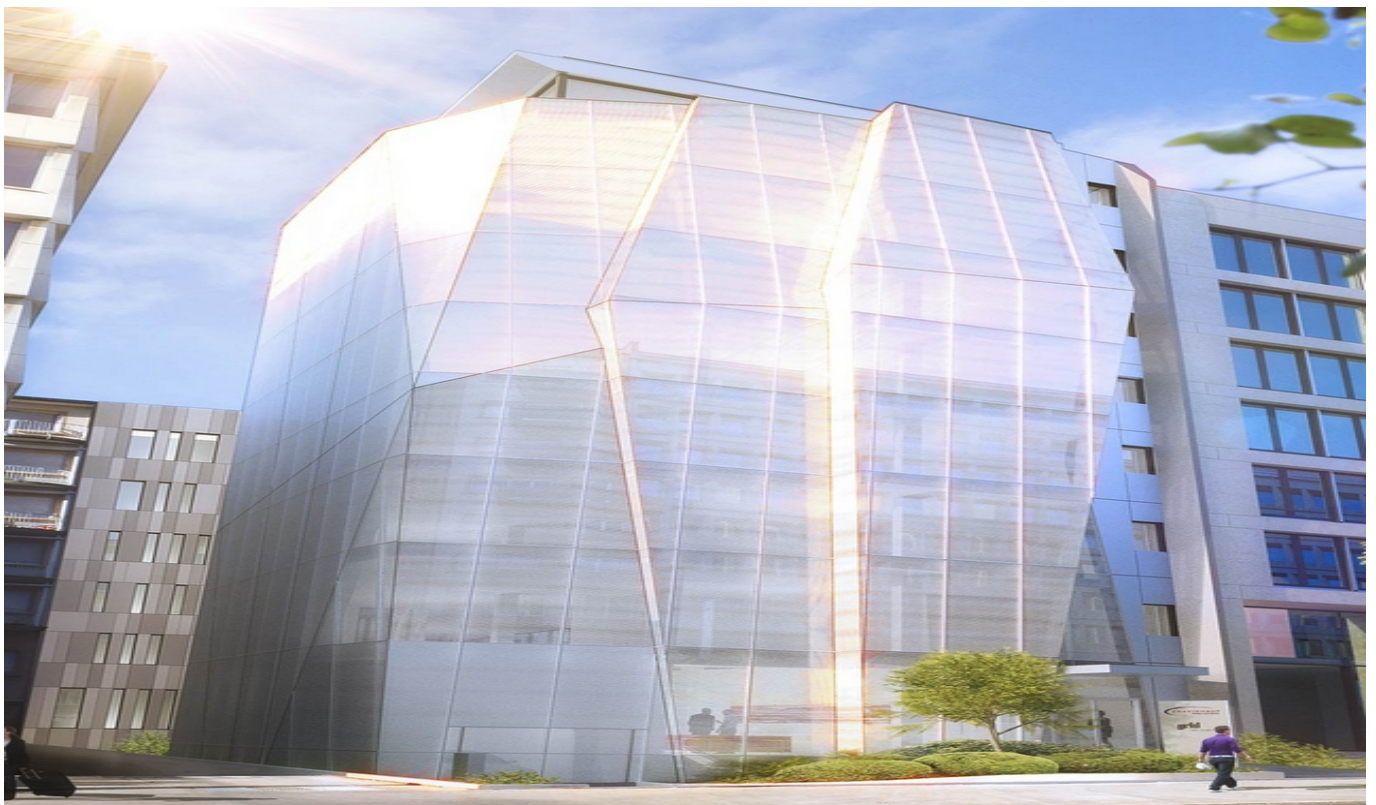


Luxembourg-centre ville – CBD

# Diamond building, luxury contemporary building

*Property ID: 38\_2*



Property ID: 38\_2 - L-2449 Luxembourg-centre ville – CBD

- At a glance
- The property
- Energy Data
- A first impression
- Contact partner

Property ID: 38\_2 - L-2449 Luxembourg-centre ville – CBD

## At a glance

Property ID	38_2	Subject to commission	Yes
Available from	According to the arrangement	Total Space	ca. 350 m <sup>2</sup>
Floor	3	Condition of property	Like new
		Usable Space	ca. 0 m <sup>2</sup>

Property ID: 38\_2 - L-2449 Luxembourg-centre ville – CBD

## Energy Data

Type of heating Central heating

Property ID: 38\_2 - L-2449 Luxembourg-centre ville – CBD

## The property



Property ID: 38\_2 - L-2449 Luxembourg-centre ville – CBD

## The property



Property ID: 38\_2 - L-2449 Luxembourg-centre ville – CBD

## A first impression

Contemporary luxury building located on the Boulevard Royal and facing the future center Hamilius. Modern office space, very bright Cloisoning possible on request. 20 minutes from the airport 5 minutes from Kirchberg 10 minutes from motorways

Property ID: 38\_2 - L-2449 Luxembourg-centre ville – CBD

## Contact partner

For further information, please contact your contact person:

VON POLL REAL ESTATE Limpertsberg

---

6, avenue Pasteur Limpertsberg  
E-Mail: [limpertsberg@von-poll.com](mailto:limpertsberg@von-poll.com)

*To Disclaimer of von Poll Immobilien GmbH*

---

[www.von-poll.com](http://www.von-poll.com)